

OPAL 10/25

OPAL L30/L50

MEDICAL CO₂ laser line



L A S R A M
engineering ▪ laser ▪ technology

OPAL MEDICAL CO₂ laser line

State of the art performance with many advantages in clinical and outpatient practice:

- sterile and precise cuts
- narrow necrotic zone
- minimal oedema
- quick wound healing
- less bleeding, well observable operating field
- less post-operative pain
- short hospitalisation

Main Features:

- well controlled tissue effects can be adjusted continuously
- wide spectrum of applications through 3 operation modes
- optimized for all medical disciplines
- large selection of handpieces, angled tips and other surgical accessories
- high accuracy in micro-surgery
- can be attached to most surgical stereomicroscopes and colposcopes including Zeiss, Leica, Wild, Kaps, Wetzlar, Storz, Olympus, etc.
- built-in scanner preparation
- low operational costs and service demand



Specifications

OPAL 10 (25)

| | |
|-----------------|---|
| Laser type | OPAL 10 (25) surgical laser |
| Laser source | 10 (25)W, long life sealed off tube, RF excited |
| Power on tissue | 0.5–10 (25)W, cont. adjustable in 0.2W steps |
| Operating modes | Continuous (CW) |
| | Single pulse |
| | Repeated pulse |
| Beam Delivery | 7-joint spring balanced arm, 1300mm work radius |
| Cooling | Air |
| Operating panel | Touch screen display, sound signal when READY |
| Memory | 5 freely programmable + scanner parameters |
| Power supply | 230V, 50Hz, 4A, PE |
| Dimensions (mm) | 375(W) x 475(D) x 1150(H) / (1970 with arm) |
| Approvals | CE 2409 |



OPAL L30 (L50)



| | |
|-----------------|---|
| Laser type | OPAL L30 (L50) surgical laser |
| Laser source | 30 (50)W, DC excited |
| Power on tissue | 0.1–30 (50)W, superpulse: 0.4 (0.6) – 12 (18)W |
| Operating modes | Continuous (CW) |
| | Superpulse mode |
| | Pulse mode |
| Beam Delivery | 7-joint spring balanced arm, 1300mm work radius |
| Cooling | Air |
| Operating panel | LCD display |
| Memory | 5 freely programmable + scanner parameters |
| Power supply | 230V, 50/60Hz, 4 (6)A, PE |
| Dimensions (mm) | 290(W) x 450(D) x 1240(H) / (1540 with arm) |
| Approvals | CE 2409 |

TrueScan scanner

The ideal tool for precise laser treatment on the tissue surface and in medium depth.

Well controlled tissue ablation through adjustment of pattern size, position, scanning speed and irradiation time.



Number of the forms: 11
 Figure size: 2-8 mm
 Energy density: 5-12 J/cm²

Fractional therapy is successfully used for many different surgical and aesthetic treatments.

A larger spot size (**DOT**) fractional therapy is for treatment of larger areas,



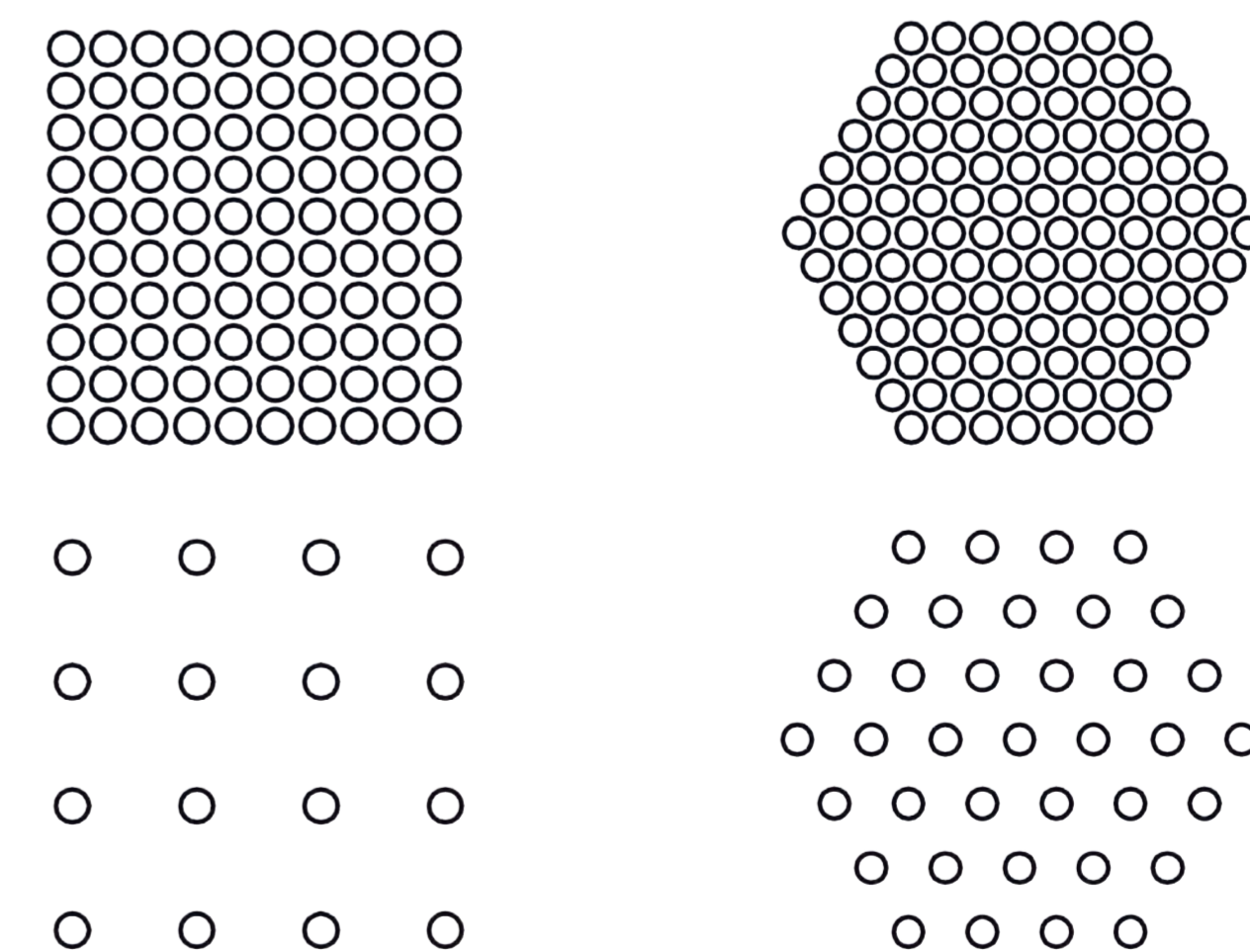
DOT 0.8 Fractional Handpiece
 Tissue penetration depth: 0.1 mm
 Figure Size: 2-10 mm

while the depth treatment (**DEEP**) is for smaller and deeper surfaces.



DEEP 0.15 Fractional Handpiece
 Tissue penetration depth: 1 mm
 Figure Size: 2-5 mm

Application of fractional therapy results in shorter recovery time compared to continuous scanning.



Coverage can be varied between 20% and 80%

Micromanipulator



Mm-91

- can be connected to the manipulator arm and the scanner
- finely tuned micro-surgical surgery
- zoom system with 200, 250, 300, 350 and 400 mm focus distances
- focal spot diameter: 0.35 - 0.75 mm
- beam direction joystick
- comfortable hand support
- adaptable for most micro- and colposcopes (Zeiss, Leica, Kaps, Olympus, etc.)

With the Mm-91 micromanipulator certain micro-surgical treatments such as Middle Ear Surgery, Rhinology, Laryngeal Surgery, LAUP, etc. are more accurate than by hand or handpiece.

The optical system provides a parallax-free operation, which means that the optical axis of the microscope and the optical axis of the laser beam are aligned.

The open design of the micromanipulator house facilitates wide range of different surgery types.



Application

ENT

- Endoscopic and micro-surgical laser treatments of benign/malign illnesses in the upper aerodigestive tract
- Laser stapedotomy/stapedectomy
- Laser assisted uvulopalatoplasty - LAUP
- Tonsillotomy/tonsillectomy
- Facial lesions

Dermatology & Plastic Surgery

- Skin tumors
- Keloids
- Condylomas
- Treatment of scars
- Skin resurfacing
- Warts, etc.

Proctology

- Fissures
- Tumors
- Stenosis

Neurosurgery

- Tumors

Dentistry & Oral Surgery

- Implantology
- Paradontology



Gynecology

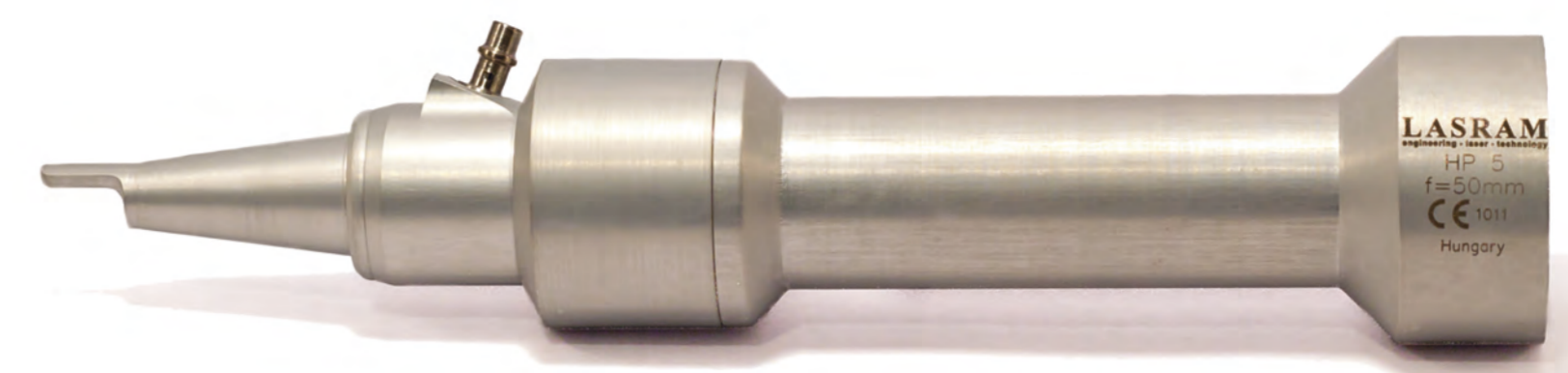
- Intrauterine surgery
- Abdominal surgery
- Vaginal tightening treatment
- Vaginal dryness treatment
- Incontinence treatment

Laser accessories

Hand pieces



focal length: 200 mm



focal length: 50 mm



focal length: 127 mm

Scanner handpieces



DEEP 0.15 fractional handpiece



Standard scanner handpiece

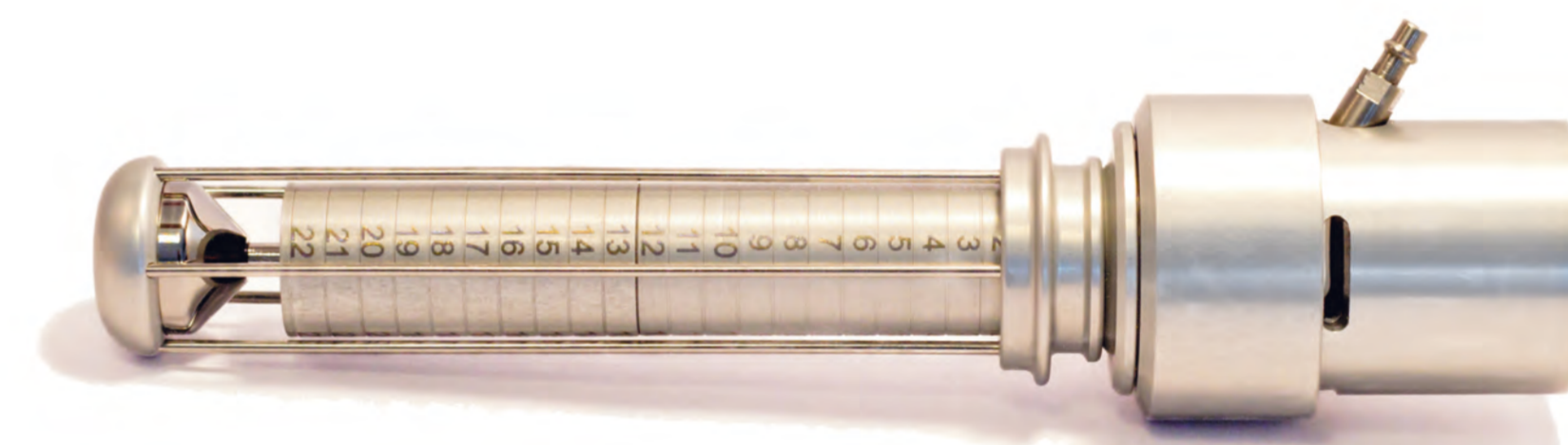


DOT 0.8 fractional handpiece

Intimate handpieces



Intimate handpiece for vaginal treatment



Intimate handpiece for incontinence treatment

Tips



Mirror angled tip, 90°



Mirror angled tip, 120° + ADT adapter



Backstop for 127mm handpiece



Backstop for 200mm handpiece

ENT handpiece set

ENT optics

0°

90°

120°





D-85774 Unterföhring
Münchener Strasse 18.
Germany

H-1044 Budapest
Ezred utca 2.B2/2.
Hungary
Tel: +36-1-688 1910
Fax: +36-1-688 1911
e-mail: info@lasram.hu

H-2500 Esztergom
Mátyás király utca 44.
Hungary

All rights reserved.
© Lasram Engineering Ltd.
www.lasram.hu

